

L.N. 162 of 2017

Closed Area (Hong Kong-Zhuhai-Macao Bridge Hong Kong Port and Hong Kong Link Road) Order

Contents

Section	Page
1. Commencement	B4665
2. Interpretation	B4665
3. Declaration of closed area	B4665
Schedule 1 Location Map	B4671
Schedule 2 Zones Comprised in Closed Area	B4675
Schedule 3 Maps	B4695

Closed Area (Hong Kong-Zhuhai-Macao Bridge Hong Kong Port and Hong Kong Link Road) Order

(Made by the Chief Executive under section 36(1) of the Public Order Ordinance (Cap. 245) after consultation with the Executive Council)

1. Commencement

This Order comes into operation on a day to be appointed by the Secretary for Security by notice published in the Gazette.

2. Interpretation

In this Order—

Hong Kong Link Road (香港連接路) means the Hong Kong-Zhuhai-Macao Bridge Hong Kong Link Road delineated and shown edged red on the map titled “LOCATION MAP OF HONG KONG-ZHUHAI-MACAO BRIDGE HONG KONG PORT AND HONG KONG-ZHUHAI-MACAO BRIDGE HONG KONG LINK ROAD”, numbered “ISM2670 (LOCATION MAP)” and contained in Schedule 1;

Hong Kong Port (香港口岸) means the Hong Kong-Zhuhai-Macao Bridge Hong Kong Port delineated and shown edged dark blue on the map titled “LOCATION MAP OF HONG KONG-ZHUHAI-MACAO BRIDGE HONG KONG PORT AND HONG KONG-ZHUHAI-MACAO BRIDGE HONG KONG LINK ROAD”, numbered “ISM2670 (LOCATION MAP)” and contained in Schedule 1.

3. Declaration of closed area

(1) The area specified in subsection (2) is declared to be a closed area.

-
- (2) The area referred to in subsection (1) comprises—
- (a) the following zones, which are located at the Hong Kong Port—
 - (i) the pink zone, to the extent of the areas that are located at the Hong Kong Port, described in section 2 of Schedule 2;
 - (ii) the yellow zone, to the extent of the areas that are located at the Hong Kong Port, described in section 3 of Schedule 2;
 - (iii) the green zone, to the extent of the areas that are located at the Hong Kong Port, described in section 4 of Schedule 2;
 - (iv) the blue zone described in section 5 of Schedule 2;
 - (v) the magenta zone described in section 6 of Schedule 2;
 - (vi) the dark violet zone described in section 7 of Schedule 2;
 - (vii) the grey zone described in section 8 of Schedule 2;
 - (b) the following zones, which are located at or adjacent to the Hong Kong Link Road (other than the section of the Road located within the Hong Kong Port)—
 - (i) the pink zone, to the extent of the areas that are located at the Hong Kong Link Road, described in section 2 of Schedule 2;
 - (ii) the yellow zone, to the extent of the area that is located at the Hong Kong Link Road, described in section 3 of Schedule 2;

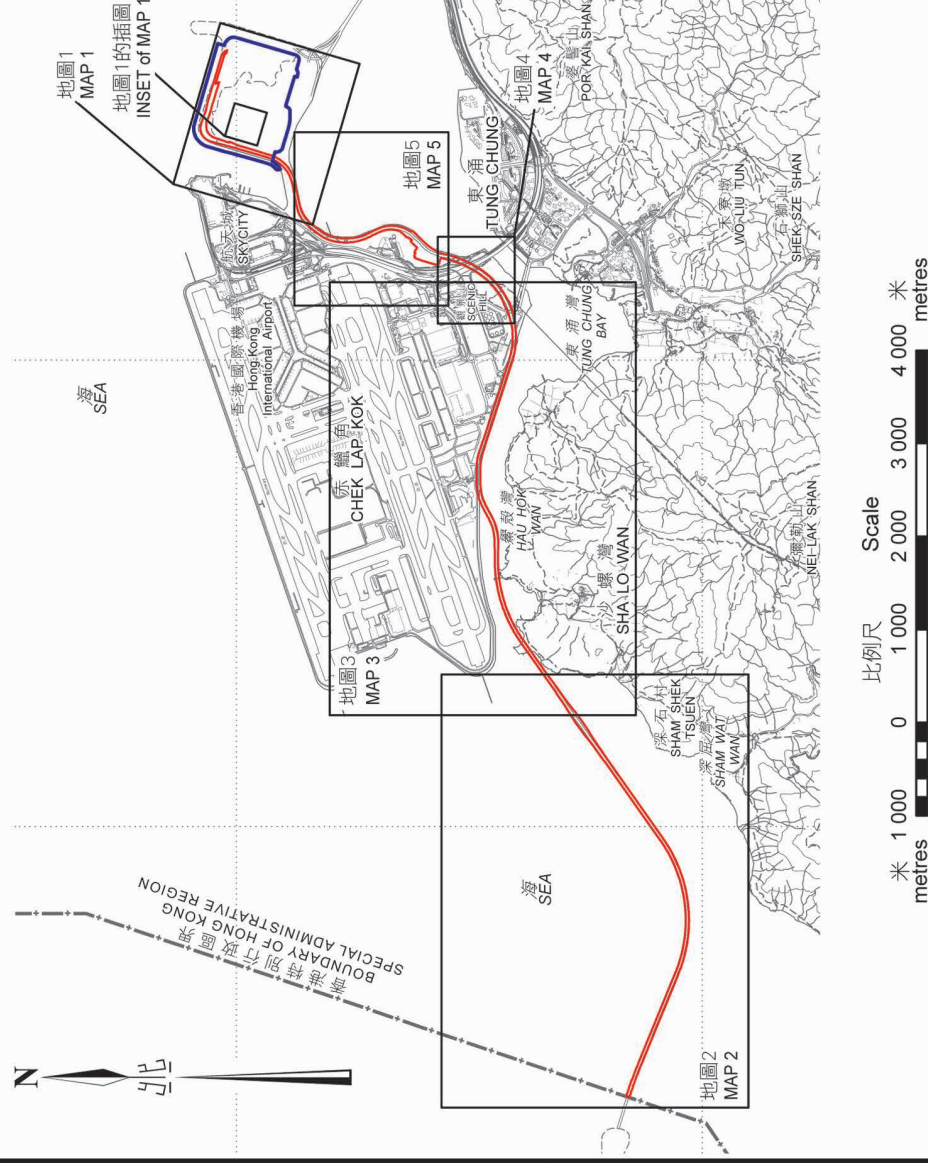
-
- (iii) the light green zone described in section 9 of Schedule 2;
 - (iv) the light blue zone described in section 10 of Schedule 2;
 - (v) the red zone described in section 11 of Schedule 2;
 - (vi) the orange zone described in section 12 of Schedule 2;
 - (vii) the dark blue zone described in section 13 of Schedule 2;
 - (viii) the violet zone described in section 14 of Schedule 2;
 - (ix) the beige zone described in section 15 of Schedule 2;
 - (x) the brown zone described in section 16 of Schedule 2; and
- (c) the following zones, which are adjacent to the Hong Kong Port and the Hong Kong Link Road—
- (i) the pink zone, to the extent of the areas that are located outside the Hong Kong Port and the Hong Kong Link Road, described in section 2 of Schedule 2;
 - (ii) the yellow zone, to the extent of the areas that are located outside the Hong Kong Port and the Hong Kong Link Road, described in section 3 of Schedule 2;
 - (iii) the green zone, to the extent of the areas that are located outside the Hong Kong Port and the Hong Kong Link Road, described in section 4 of Schedule 2.
-

Schedule 1

[s. 2]

Location Map

港珠澳大橋香港口岸及港珠澳大橋香港連接路位置地圖
 LOCATION MAP OF HONG KONG-ZHUHAI-MACAO BRIDGE HONG KONG PORT
 AND HONG KONG-ZHUHAI-MACAO BRIDGE HONG KONG LINK ROAD



圖例 LEGEND

- 深藍色邊線 - 港珠澳大橋香港口岸
 Edged dark blue - Hong Kong-Zhuhai-Macao Bridge Hong Kong Port
- 紅色邊線 - 港珠澳大橋香港連接路
 Edged red - Hong Kong-Zhuhai-Macao Bridge Hong Kong Link Road



地政總署 離島測量處
 District Survey Office, Islands
 Lands Department

© 香港特別行政區政府 - 版權所有
 © Copyright reserved - Hong Kong SAR Government

只作識別用
 FOR IDENTIFICATION PURPOSES ONLY

地圖編號 ISM2670 (位置地圖)
 MAP No. (LOCATION MAP)

Schedule 2

[s. 3]

Zones Comprised in Closed Area

1. Interpretation

In this Schedule—

Inset of Map 1 (地圖1的插圖) means the map titled “INSET OF MAP 1 - PART OF HONG KONG-ZHUHAI-MACAO BRIDGE HONG KONG PORT”, numbered “ISM2670 (INSET of MAP 1)” and contained in Schedule 3;

Map 1 (地圖1) means the map titled “MAP 1 - SECTION OF HONG KONG-ZHUHAI-MACAO BRIDGE HONG KONG LINK ROAD, HONG KONG-ZHUHAI-MACAO BRIDGE HONG KONG PORT AND ADJACENT AREAS”, numbered “ISM2670 (MAP 1)” and contained in Schedule 3;

Map 4 (地圖4) means the map titled “MAP 4 - SECTION OF HONG KONG-ZHUHAI-MACAO BRIDGE HONG KONG LINK ROAD”, numbered “ISM2670 (MAP 4)” and contained in Schedule 3;

Map 5 (地圖5) means the map titled “MAP 5 - SECTION OF HONG KONG-ZHUHAI-MACAO BRIDGE HONG KONG LINK ROAD”, numbered “ISM2670 (MAP 5)” and contained in Schedule 3.

2. Pink zone

The pink zone comprises all of the areas each of which is enclosed by—

- (a) a horizontal boundary that is the outermost edge line of—
 - (i) an area located at the Hong Kong Port and shown coloured pink (including any area shown coloured pink cross-hatched black) on Map 1;
 - (ii) an area located at the Hong Kong Link Road and shown coloured pink on Map 1; or
 - (iii) an area located outside the Hong Kong Port and the Hong Kong Link Road, and shown coloured pink on Map 1;
- (b) an upper vertical boundary set, subject to section 17 of this Schedule, at an elevation of +80 mPD (metres above Hong Kong Principal Datum); and
- (c) a lower vertical boundary set at an elevation of -6 mPD (metres below Hong Kong Principal Datum).

3. Yellow zone

The yellow zone comprises all of the areas each of which is enclosed by—

- (a) a horizontal boundary that is the outermost edge line of an area—
 - (i) located at the Hong Kong Port and shown coloured yellow cross-hatched black (indicated as a viaduct or section of a viaduct) on Map 1;
 - (ii) located at the Hong Kong Link Road and shown coloured yellow cross-hatched black (indicated as a viaduct or section of a viaduct) on Map 1; or

- (iii) located outside the Hong Kong Port and the Hong Kong Link Road, and shown coloured yellow cross-hatched black (indicated as a viaduct or section of a viaduct) on Map 1;
- (b) an upper vertical boundary set, subject to section 17 of this Schedule, at an elevation of +80 mPD (metres above Hong Kong Principal Datum); and
- (c) a lower vertical boundary set at the bottom surface of the viaduct deck structure.

4. Green zone

The green zone comprises all of the areas each of which is enclosed by—

- (a) a horizontal boundary that is the outermost edge line of an area—
 - (i) located at the Hong Kong Port and shown coloured green cross-hatched black (indicated as the ground surface and at-grade road underneath viaduct) on Map 1; or
 - (ii) located outside the Hong Kong Port and the Hong Kong Link Road, and shown coloured green cross-hatched black (indicated as the ground surface and at-grade road underneath viaduct) on Map 1;
- (b) an upper vertical boundary set at the bottom surface of the viaduct deck structure; and
- (c) a lower vertical boundary set at an elevation of -6 mPD (metres below Hong Kong Principal Datum).

5. Blue zone

The blue zone is the area enclosed by—

- (a) a horizontal boundary that is the outermost edge line of the area shown coloured blue (indicated as a part of the Passenger Clearance Building) on the Inset of Map 1;
- (b) an upper vertical boundary set, subject to section 17 of this Schedule, at an elevation of +80 mPD (metres above Hong Kong Principal Datum); and
- (c) a lower vertical boundary set at an elevation of +12 mPD (metres above Hong Kong Principal Datum).

6. Magenta zone

- (1) Subject to subsection (2), the magenta zone is the area enclosed by—
 - (a) a horizontal boundary that is the outermost edge line of the area shown coloured magenta (indicated as a part of the Passenger Clearance Building) on the Inset of Map 1;
 - (b) an upper vertical boundary set, subject to section 17 of this Schedule, at an elevation of +80 mPD (metres above Hong Kong Principal Datum); and
 - (c) a lower vertical boundary set at an elevation of -6 mPD (metres below Hong Kong Principal Datum).
- (2) The magenta zone does not include the area enclosed by—
 - (a) a horizontal boundary that is the outermost edge line of the area shown coloured magenta (indicated as a part of the Passenger Clearance Building) on the Inset of Map 1;

- (b) an upper vertical boundary set at the bottom surface of the floor slab structure of the first floor of the Passenger Clearance Building; and
- (c) a lower vertical boundary set at the top surface of the floor slab structure of the ground floor of the Passenger Clearance Building.

7. Dark violet zone

- (1) Subject to subsection (2), the dark violet zone comprises all of the areas each of which is enclosed by—
 - (a) a horizontal boundary that is the outermost edge line of an area shown coloured dark violet (indicated as a part of the Passenger Clearance Building) on the Inset of Map 1;
 - (b) an upper vertical boundary set, subject to section 17 of this Schedule, at an elevation of +80 mPD (metres above Hong Kong Principal Datum); and
 - (c) a lower vertical boundary set at an elevation of -6 mPD (metres below Hong Kong Principal Datum).
- (2) The dark violet zone does not include the areas each of which is enclosed by—
 - (a) a horizontal boundary that is the outermost edge line of an area shown coloured dark violet (indicated as a part of the Passenger Clearance Building) on the Inset of Map 1;
 - (b) an upper vertical boundary set at the bottom surface of the floor slab structure of the mezzanine floor of the Passenger Clearance Building; and

- (c) a lower vertical boundary set at the top surface of the floor slab structure of the ground floor of the Passenger Clearance Building.

8. Grey zone

The grey zone is the area enclosed by—

- (a) a horizontal boundary that is the outermost edge line of the area shown coloured grey (indicated as a part of the main roof of the Passenger Clearance Building) on the Inset of Map 1;
- (b) an upper vertical boundary set, subject to section 17 of this Schedule, at an elevation of +80 mPD (metres above Hong Kong Principal Datum); and
- (c) a lower vertical boundary set at the bottom surface of the main roof structure of the Passenger Clearance Building.

9. Light green zone

The light green zone comprises all of the areas each of which is enclosed by—

- (a) a horizontal boundary that is the outermost edge line of an area shown coloured light green (indicated as a section of the Hong Kong Link Road with box culvert underneath) on Map 1 or Map 5;
- (b) an upper vertical boundary set, subject to section 17 of this Schedule, at an elevation of +80 mPD (metres above Hong Kong Principal Datum); and
- (c) a lower vertical boundary set at the top surface of the box culvert structure.

10. Light blue zone

- (1) The light blue zone comprises all of the areas each of which is enclosed by—
 - (a) a horizontal boundary that is the outermost edge line of an area shown coloured light blue cross-hatched black (indicated as a section of a viaduct) on Map 2 or Map 3;
 - (b) an upper vertical boundary set, subject to section 17 of this Schedule, at an elevation of +80 mPD (metres above Hong Kong Principal Datum); and
 - (c) a lower vertical boundary set at the bottom surface of the viaduct deck structure.
- (2) In subsection (1)—

Map 2 (地圖2) means the map titled “MAP 2 - SECTION OF HONG KONG-ZHUHAI-MACAO BRIDGE HONG KONG LINK ROAD”, numbered “ISM2670 (MAP 2)” and contained in Schedule 3;

Map 3 (地圖3) means the map titled “MAP 3 - SECTION OF HONG KONG-ZHUHAI-MACAO BRIDGE HONG KONG LINK ROAD”, numbered “ISM2670 (MAP 3)” and contained in Schedule 3.

11. Red zone

The red zone is the area enclosed by—

- (a) a horizontal boundary that is the outermost edge line of the area shown coloured red on Map 4;
- (b) an upper vertical boundary set, subject to section 17 of this Schedule, at an elevation of +80 mPD (metres above Hong Kong Principal Datum); and

- (c) a lower vertical boundary set at an elevation of -6 mPD (metres below Hong Kong Principal Datum).

12. Orange zone

The orange zone is the area enclosed by—

- (a) a horizontal boundary that is the outermost edge line of the area shown coloured orange (indicated as a part of the Scenic Hill Tunnel) on Map 4;
- (b) an upper vertical boundary set at the top surface of the Scenic Hill Tunnel; and
- (c) a lower vertical boundary set at the bottom surface of the Scenic Hill Tunnel.

13. Dark blue zone

The dark blue zone is the area enclosed by—

- (a) a horizontal boundary that is the outermost edge line of the area shown coloured dark blue (indicated as a part of the Scenic Hill Tunnel) on Map 5;
- (b) an upper vertical boundary set, subject to section 17 of this Schedule, at an elevation of $+80$ mPD (metres above Hong Kong Principal Datum); and
- (c) a lower vertical boundary set at the bottom surface of the Scenic Hill Tunnel.

14. Violet zone

The violet zone is the area enclosed by—

- (a) a horizontal boundary that is the outermost edge line of the area shown coloured violet (indicated as a ramp of the Scenic Hill Tunnel) on Map 5;

- (b) an upper vertical boundary set, subject to section 17 of this Schedule, at an elevation of +80 mPD (metres above Hong Kong Principal Datum); and
- (c) a lower vertical boundary set at the bottom surface of the ramp structure of the Scenic Hill Tunnel.

15. Beige zone

The beige zone comprises all of the areas each of which is enclosed by—

- (a) a horizontal boundary that is the outermost edge line of an area shown coloured beige (indicated as a section of the Hong Kong Link Road) on Map 5;
- (b) an upper vertical boundary set, subject to section 17 of this Schedule, at an elevation of +80 mPD (metres above Hong Kong Principal Datum); and
- (c) a lower vertical boundary set at an elevation of -6 mPD (metres below Hong Kong Principal Datum).

16. Brown zone

The brown zone is the area enclosed by—

- (a) a horizontal boundary that is the outermost edge line of the area shown coloured brown (indicated as a section of the Hong Kong Link Road with maintenance subway underneath) on Map 5;
- (b) an upper vertical boundary set, subject to section 17 of this Schedule, at an elevation of +80 mPD (metres above Hong Kong Principal Datum); and
- (c) a lower vertical boundary set at the top surface of the maintenance subway structure.

17. Upper vertical boundary set at restricted height in particular cases

(1) If an upper vertical boundary mentioned in a relevant section in relation to an area is higher than the restricted height applicable to the area or part of the area, the upper vertical boundary of the area or part is set at the restricted height applicable to the area or part (as the case requires).

(2) In subsection (1)—

relevant section (有關條文) means section 2, 3, 5, 6(1), 7(1), 8, 9, 10(1), 11, 13, 14, 15 or 16 of this Schedule;

restricted height (限制高度), in relation to an area or a part of an area, means the height above the principal datum—

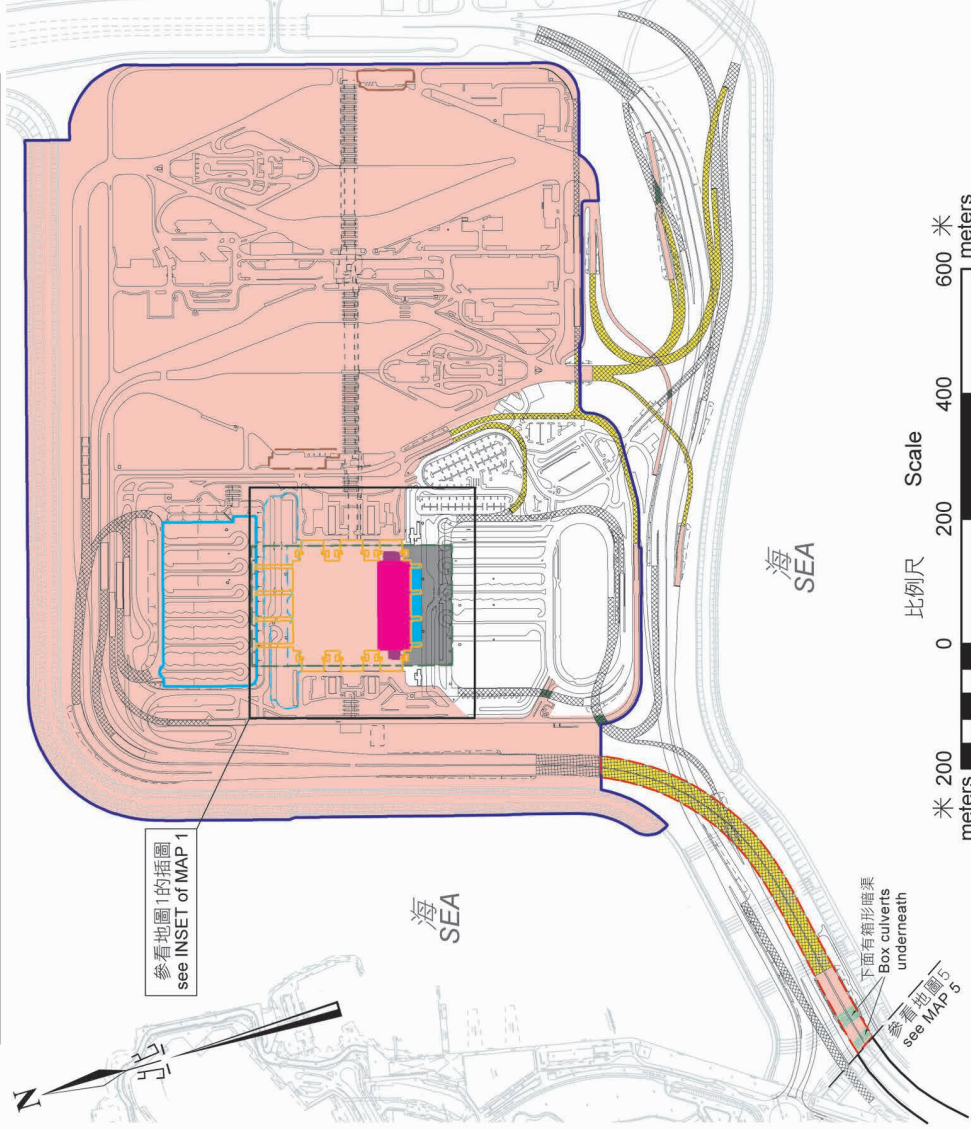
- (a) referred to in section 3(1) of the Hong Kong Airport (Control of Obstructions) (No. 2) Order 1997 (Cap. 301 sub. leg. D); and
 - (b) applicable to the area or part under that Order.
-

Schedule 3

[Sch. 2]

Maps

地圖1 - 港珠澳大橋香港連接路路段、港珠澳大橋香港口岸及毗鄰地區
 MAP 1 - SECTION OF HONG KONG-ZHUHAI-MACAO BRIDGE HONG KONG LINK ROAD,
 HONG KONG-ZHUHAI-MACAO BRIDGE HONG KONG PORT AND ADJACENT AREAS



圖例 LEGEND

- | | | | | | | | | | | | | | | | |
|--|---|--|---|--|--|--|---|--|--|--|---|--|---|--|--|
| | 縹黑交叉線 - 高架道路
Cross-hatched black - viaduct | | 粉紅色或粉紅色縹黑交叉線
Pink or pink cross-hatched black | | 黃色縹黑交叉線 - 高架道路或高架道路路段
Yellow cross-hatched black - viaduct or section of a viaduct | | 綠色縹黑交叉線 - 高架道路下面的地面及地面道路
Green cross-hatched black - ground surface and at-grade road underneath viaduct | | 淺綠色 - 下面有箱形樁渠的港珠澳大橋香港連接路路段
Light green - section of Hong Kong-Zhuhai-Macao Bridge Hong Kong Link Road with box culvert underneath | | 棕色邊線 - 出境私家車旅客檢查站
Edged brown -
Departure Private Car Passenger Clearance Annex | | 藍色邊線 - 跨境巴士及跨境穿梭巴士上客區
Edged blue - cross-boundary coach and
cross-boundary shuttle bus pick-up area | | 深藍色邊線 - 港珠澳大橋香港口岸
Edged dark blue - Hong Kong-Zhuhai-Macao Bridge
Hong Kong Port |
| | 棕色虛邊線 - 入境私家車旅客檢查站
Edged pecked brown
Arrival Private Car Passenger Clearance Annex | | 藍色虛邊線 - 跨境巴士及跨境穿梭巴士上落客區
Edged pecked blue - cross-boundary coach and
cross-boundary shuttle bus drop-off area | | 紅色虛邊線 - 港珠澳大橋香港連接路路段
Edged pecked red - section of Hong
Kong-Zhuhai-Macao Bridge Hong Kong Link Road | | | | | | | | | | |



地政總署 離島測量處
 District Survey Office, Islands
 Lands Department

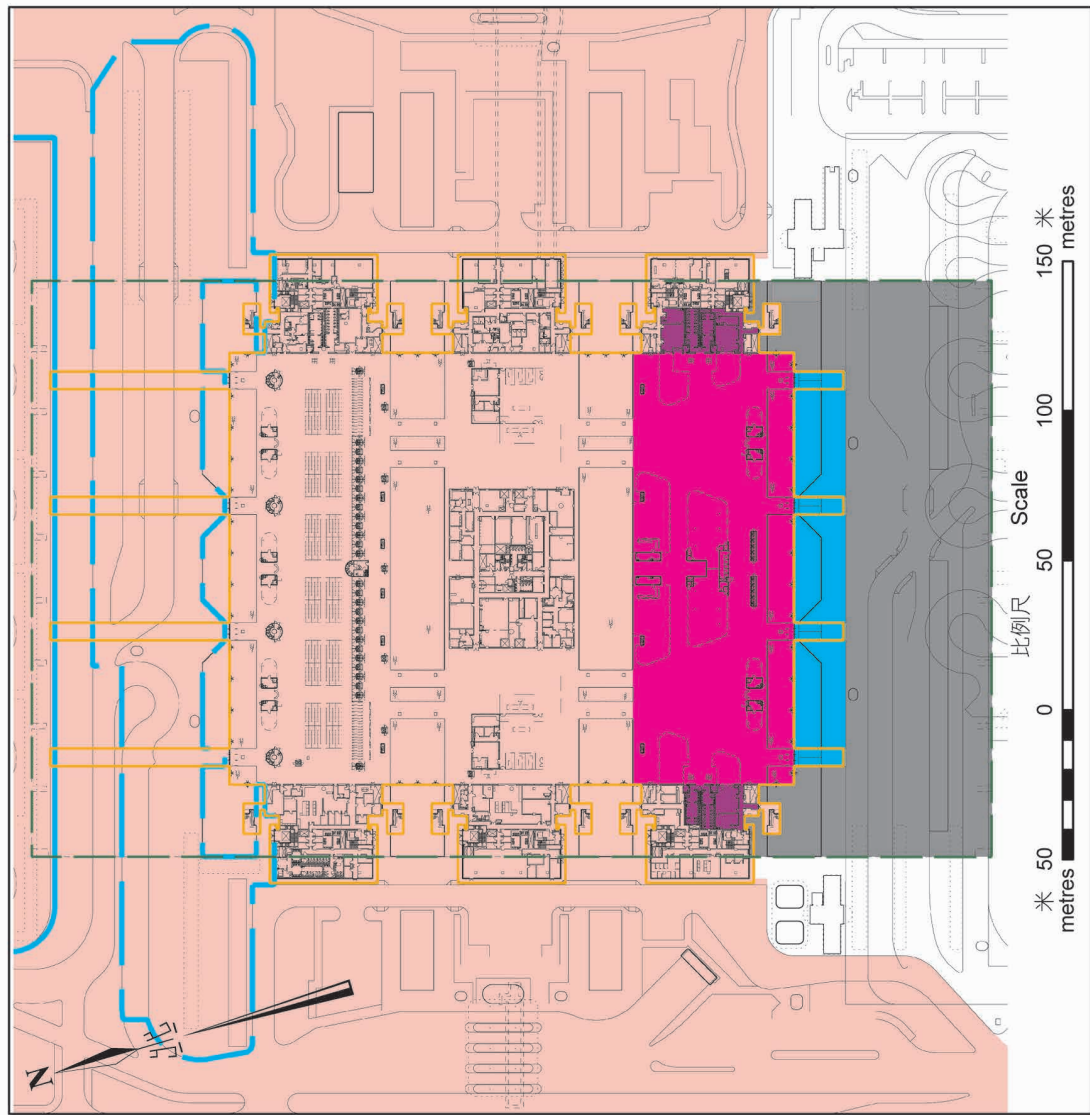
© 香港特別行政區政府 - 版權所有
 © Copyright reserved - Hong Kong SAR Government

只作識別用

FOR IDENTIFICATION PURPOSES ONLY

地圖編號 ISM2670 (地圖1)
 MAP No. (MAP 1)

地圖 1 的插圖 - 港珠澳大橋香港口岸部分
INSET OF MAP 1 - PART OF HONG KONG-ZHUHAI-MACAO BRIDGE
HONG KONG PORT



圖例 LEGEND

- 粉紅色
Pink
- 品紅色 - 旅檢大樓部分
Magenta - part of the Passenger Clearance Building
- 深紫色 - 旅檢大樓部分
Dark violet - part of the Passenger Clearance Building
- 藍色 - 旅檢大樓部分
Blue - part of the Passenger Clearance Building
- 灰色 - 旅檢大樓樓頂部分
Grey - part of the main roof of the Passenger Clearance Building

- 綠色虛邊線 - 旅檢大樓樓頂
Edged pecked green - main roof of the Passenger Clearance Building
- 橙色邊線 - 旅檢大樓
Edged orange - Passenger Clearance Building
- 藍色邊線 - 跨境巴士及
跨境穿梭巴士上落區
and cross-boundary shuttle bus pick-up area
- 藍色虛邊線 - 跨境巴士及
跨境穿梭巴士上落區
and cross-boundary shuttle bus drop-off area

米 50 100 150 metres
比例尺 Scale

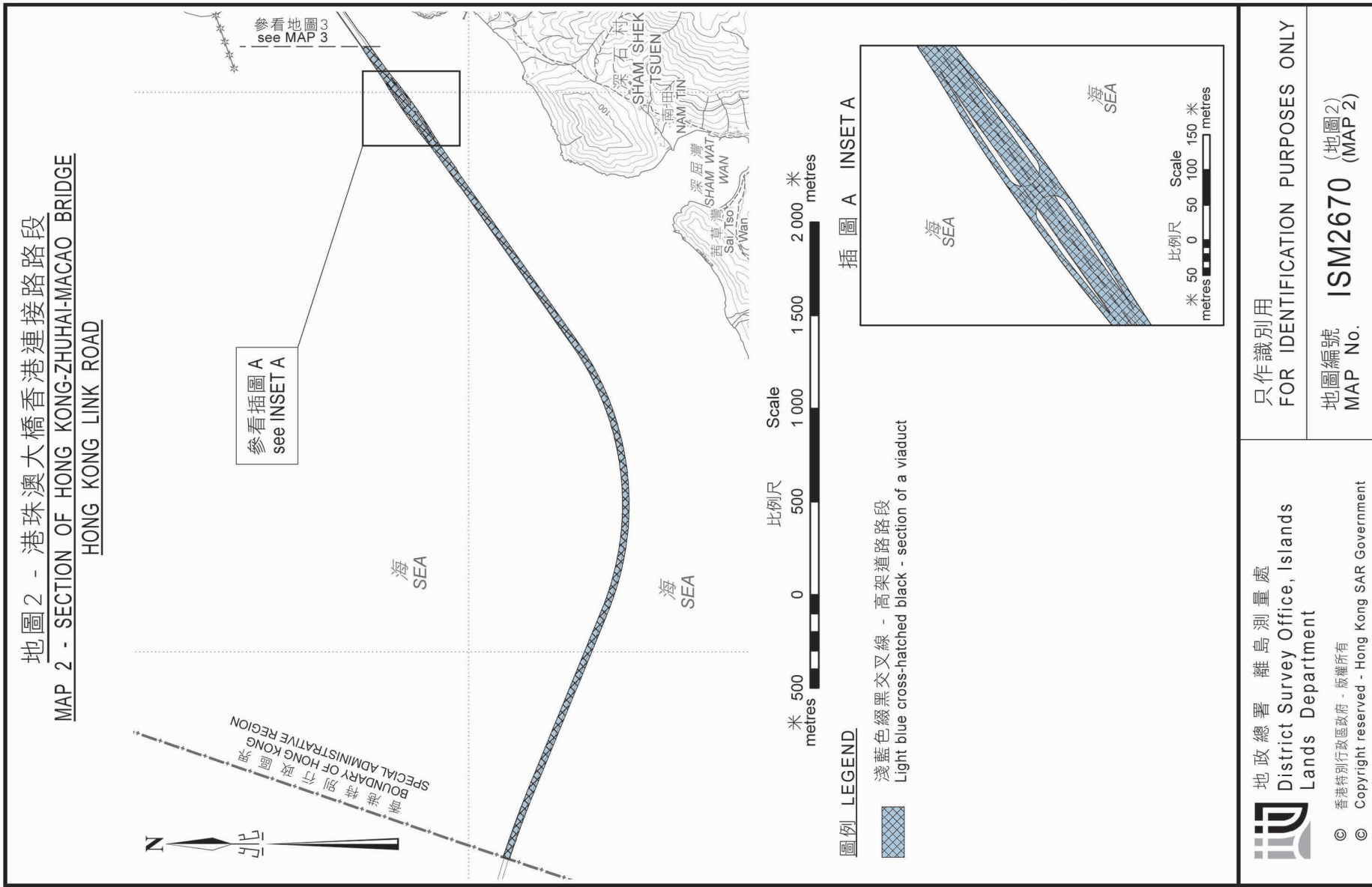


地政總署 離島測量處
District Survey Office, Islands
Lands Department

© 香港特別行政區政府 - 版權所有
© Copyright reserved - Hong Kong SAR Government

只作識別用
FOR IDENTIFICATION PURPOSES ONLY

地圖編號 ISM2670 (地圖 1 的插圖)
MAP No. (INSET OF MAP 1)



地圖3 - 港珠澳大橋香港連接路路段
 MAP 3 - SECTION OF HONG KONG-ZHUHAI-MACAO BRIDGE
 HONG KONG LINK ROAD



圖例 LEGEND

-  淺藍色綴黑交叉線 - 高架道路路段
 Light blue cross-hatched black - section of a viaduct



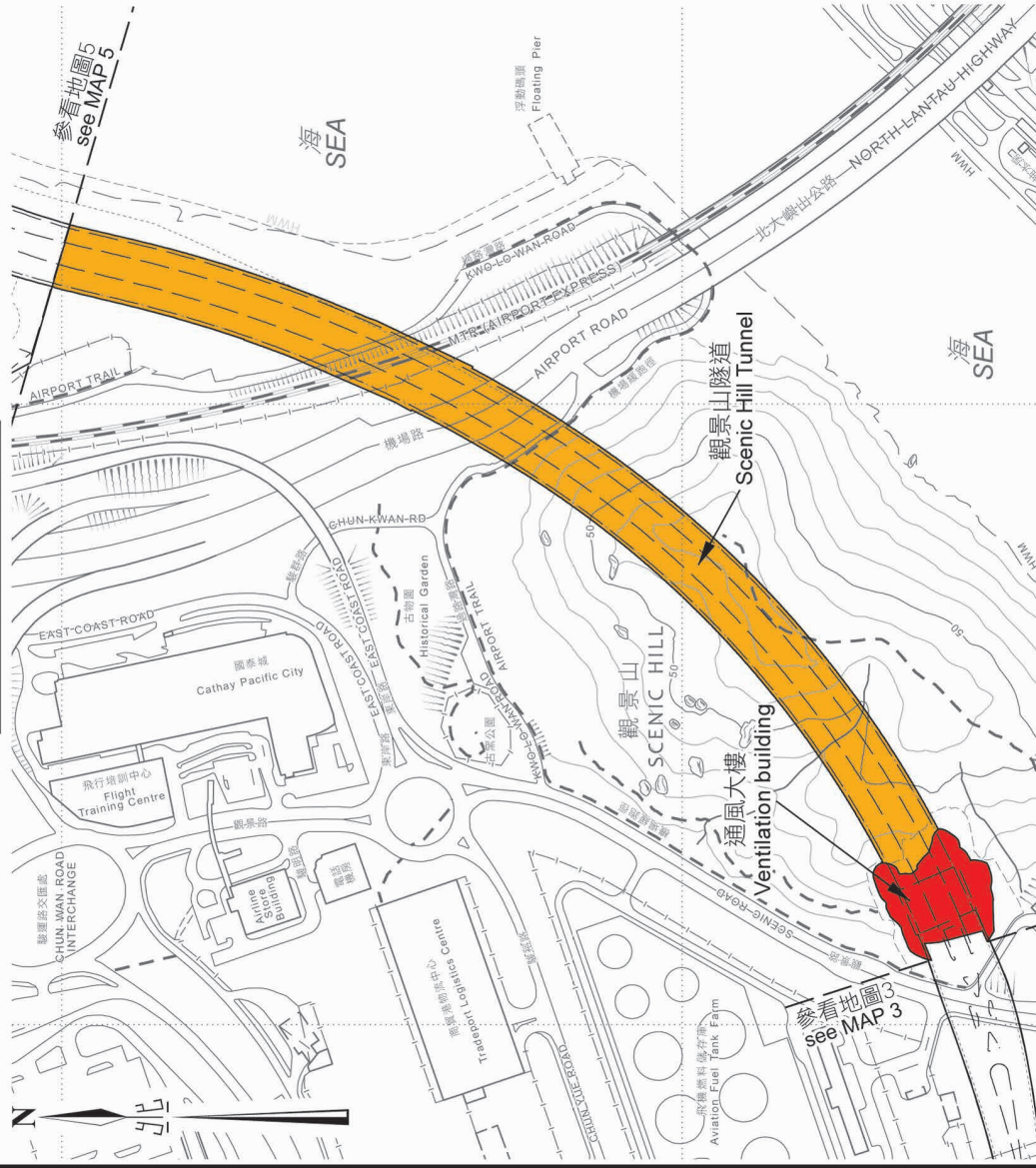
地政總署 離島測量處
 District Survey Office, Islands
 Lands Department

© 香港特別行政區政府 - 版權所有
 © Copyright reserved - Hong Kong SAR Government

只作識別用
 FOR IDENTIFICATION PURPOSES ONLY

地圖編號 (地圖3)
 MAP No. ISM2670 (MAP 3)

地圖 4 - 港珠澳大橋香港連接路路段
MAP 4 - SECTION OF HONG KONG-ZHUHAI-MACAO BRIDGE
HONG KONG LINK ROAD



圖例 LEGEND

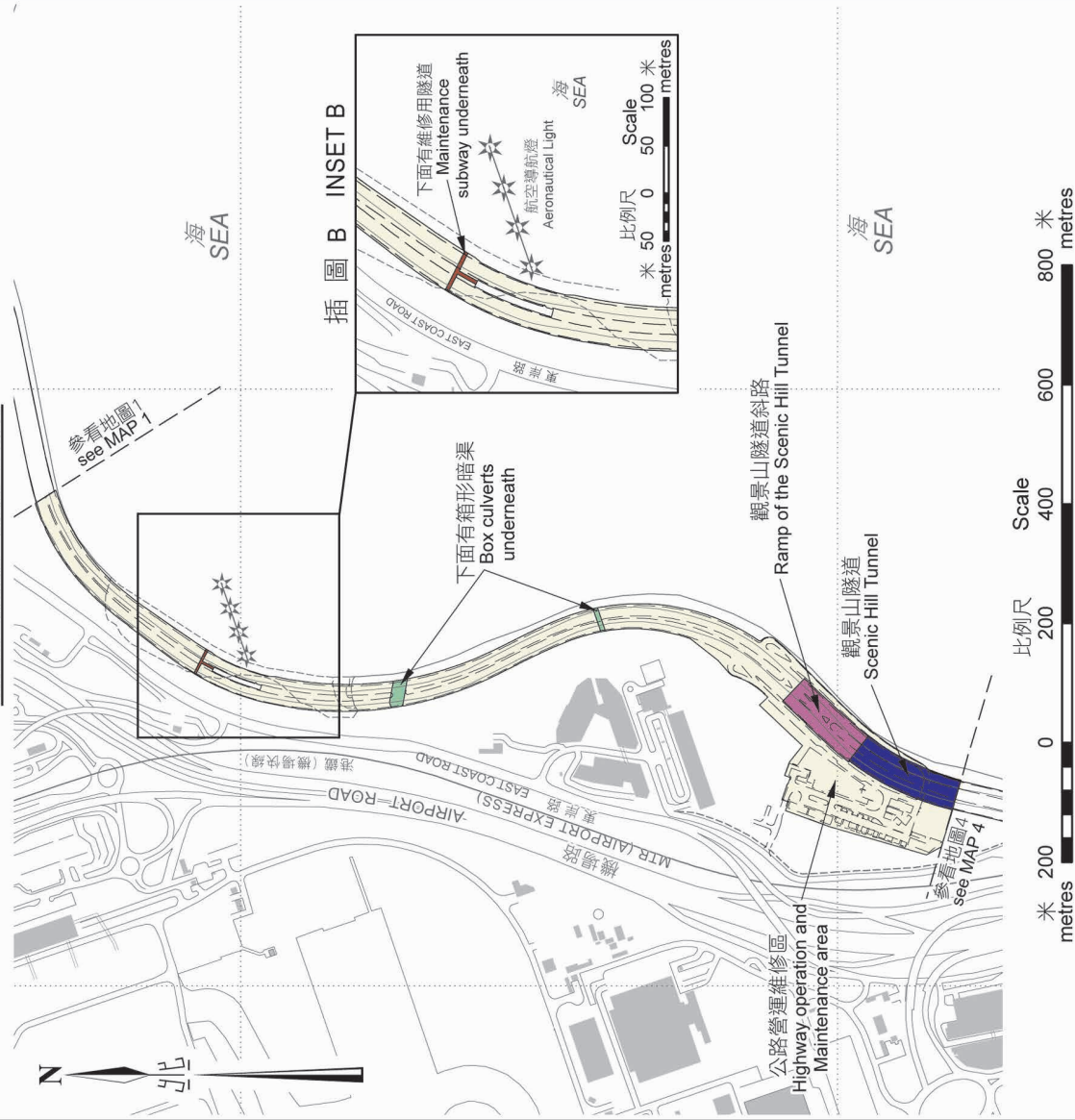
- 紅色
Red
- 橙色 - 觀景山隧道部分
Orange - part of the Scenic Hill Tunnel

地政總署 離島測量處
District Survey Office, Islands
Lands Department

只作識別用
FOR IDENTIFICATION PURPOSES ONLY

地圖編號 (地圖4)
MAP No. ISM2670 (MAP 4)

地圖5 - 港珠澳大橋香港連接路路段
MAP 5 - SECTION OF HONG KONG-ZHUHAI-MACAO BRIDGE
HONG KONG LINK ROAD



圖例 LEGEND

- 深藍色 - 觀景山隧道部分
Dark blue - part of the Scenic Hill Tunnel
- 紫色 - 觀景山隧道斜路
Violet - ramp of the Scenic Hill Tunnel
- 米色 - 港珠澳大橋香港連接路路段
Beige - section of Hong Kong-Zhuhai-Macao Bridge Hong Kong Link Road
- 淺綠色 - 下面有箱形暗渠的港珠澳大橋香港連接路路段
Light green - section of Hong Kong-Zhuhai-Macao Bridge Hong Kong Link Road with box culvert underneath
- 棕色 - 下面有維修用隧道的港珠澳大橋香港連接路路段
Brown - section of Hong Kong-Zhuhai-Macao Bridge Hong Kong Link Road with maintenance subway underneath



地政總署 離島測量處
District Survey Office, Islands
Lands Department

© 香港特別行政區政府 - 版權所有
© Copyright reserved - Hong Kong SAR Government

只作識別用
FOR IDENTIFICATION PURPOSES ONLY

地圖編號 (地圖5)
MAP No. ISM2670 (MAP 5)

Closed Area (Hong Kong-Zhuhai-Macao Bridge Hong Kong Port and Hong Kong
Link Road) Order

L.N. 162 of 2017
B4709

Carrie LAM
Chief Executive

27 September 2017

Explanatory Note

The purpose of this Order is to declare the area comprising the following areas to be a closed area under the Public Order Ordinance (Cap. 245)—

- (a) certain areas located at or adjacent to the Hong Kong-Zhuhai-Macao Bridge Hong Kong Port, including the Passenger Clearance Building (other than certain parts at the ground floor of the Building);
- (b) certain areas located at or adjacent to the Hong Kong-Zhuhai-Macao Bridge Hong Kong Link Road.